

Port Hardy's Proposed Bylaw for Chickens

Urban Agriculture

- Port Hardy's OCP seeks to provide residents with the opportunity, knowledge and resources to produce local food

Proposed Change(s)

- Other local governments allow:

4-6

4 hens in R-1 and R-2 type zones (consider 2-4 tiered structure)

- Coop must be in a fully fenced rear or side yard at a min. of 1.5m from a lot line and a min. of 3.0m from a dwelling unit
- Coop must be no more than 9.2m² in area and no higher than 2.0m at grade
- 1.8m fence or vegetative screening required
- Animal Control Bylaw regulates standards for and care of backyard chickens

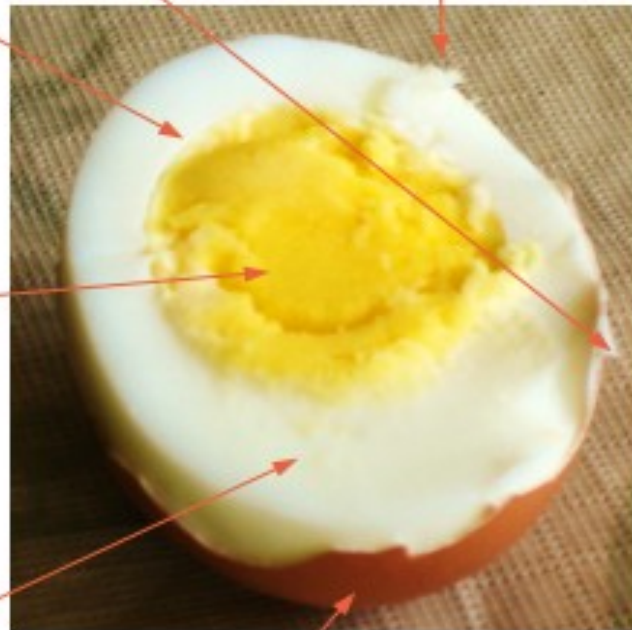


Membrane – There is a membrane just inside the shell, as well as one that surrounds the yolk. These serve to protect the contents of the egg from disease. They also divide the different parts of the egg.

Yolk – The yolk is where a chick develops if an egg is fertilized and cared for. It has high nutritional value. Orange yolks often signify that the chicken has had a healthy diet.

White (albumen) – The albumen is a protective layer around the yolk. It has lower nutritional value and less taste than the yolk, but its protein structure makes it extremely versatile in the culinary arts.

Chalaza – The stringy “rope” that holds the yolk at the centre of the egg



Shell – The outermost protective layer. It is made primarily of calcium. The colour is determined by the breed of the hen



Chicken Feed

16% Layer Pellet Product # L41980

Guaranteed Analysis	
Protein (min. %)	16.00
Fat (min. %)	3.00
Fiber (max. %)	7.00
Sodium (actual %)	0.18
Calcium (actual %)	4.20
Phosphorous (actual %)	.50
Vitamin A (min. IU/kg)	12000
Vitamin D (min. IU/kg)	5000
Vitamin E (min. IU/kg)	50
Selenium (actual mg/kg)	.30
<i>To be fed according to the table below:</i>	
Amount of LifeLine 16% Layer Pellet	
Laying Hens	Sole Ration
Ingredients	
Wheat	
Soyabean Meal	
Canola Meal	
Vegetable Oil	
Organic Selenium	
Natural Enzymes	
BioPhos®™	
Vitamin Premix®™ (Vitamin A,D,E B-COMPLEX)	
Formulated for full array of amino acids	
Calcium	
Limestone	
Sodium Betonite Natural Binder	
Salt	

SPECIES: Chickens, Turkeys,
Geese, Ducks

FEATURES: This feed meets the needs of a balanced ration for laying birds. It's formulated using premium grains to create a balanced ration for laying birds. Pelleted form helps reduce waste. Alfalfa Meal added for natural yolk color. Additional calcium added for excellent shell quality. High energy levels for egg size and maximum production. Amount of feed required will vary depending on season, activity and general condition of the species. See tag for specific information.

Directions for Use: Feed as the sole ration to laying hens along with free choice water. Hen Scratch or other grains are not recommended to be fed along with this ration and may cause soft shells. Oyster Shells can be fed to prevent this.

Caution: Directions for use must be carefully followed.

DIATOMACEOUS EARTH (FOOD GRADE)





RED MITE



SCALY LEG MITE



CHICKEN LICE





NEXT SLIDE: POOP!



CHOOSING CHICKENS





	Climatic Hardiness	Rooster Vs. Hen	Egg Production	Meat Production	Foraging Capability	Predator Awareness	Handling Flightiness	Broodiness	Ornamentability
Ancona	Cold/Heat	X	High		X	X	Flighty	Seldom	Colorful
Americauna	Cold/Heat	X	Medium		X	X	Average	Seldom	
Austorlorpe	Cold/Heat	X	High		X	X	Calm	Average	
Brahman	Cold	X	Medium		X		Calm	Frequent	
Campine	Cold/Heat	X	Medium		X	X	Flighty	Seldom	
Cochin	Cold	X	Low		X		Calm	Frequent	
Cornish Cross	Cold/Heat	X	Low	Excellent			Calm	Seldom	
Dominiquer	Cold/Heat	X	Medium		X	X	Average	Average	
English Game	Heat	X	Low		X	X	Flighty	Frequent	Colorful Rooster
Hamburg	Heat	X	Medium		X	X	Flighty	Seldom	
Hybrids	Heat	X	High				Calm	Average	
Jersey Giant	Cold	X	Medium	X	X		Calm	Average	
Marans	Cold	X	Medium		X		Average	Average	Colorful Rooster
New Hampshire	Cold/Heat	X	High		X		Average	Frequent	Colorful Rooster
Naked Neck-Turken	Heat	X	Low		X		Average	Seldom	No Neck Feathers
Orpington	Cold/Heat	X	Low				Calm	Frequent	
Phoenix	Heat	X	Low				Average	Seldom	Long Tail Feath.
Plymoth Rock	Cold/Heat	X	High		X		Average	Seldom	
Polish	Cold/Heat	X	Medium				Calm	Seldom	Poofy Head Feath.
Rhod Island Red	Cold	X	High	X	X		Average	Seldom	
Silkie	Cold	X	Medium				Calm	Frequent	Thin Poofy Feath.
Speckled Sussex	Cold/Heat	X	High		X		Average	Frequent	Speckled
Sumatra	Heat	X	Low				Average	Average	Long Tail Feath.
Welsummer	Cold	X	Medium		X		Average	Average	Dark Eggs
White Leghorn	Cold	X	High		X	X	Flighty	Seldom	
Wyandotte	Cold	X	High		X		Calm	Frequent	Laced Feathers

LARGE FOWL POULTRY



BUFF ORPINGTON PAIR



WHITE CRESTED BLACK POLISH M



DERBYSHIRE REDCAP PAIR



SCOTS DUMPY M



WHITE PLYMOUTH ROCK F



BROWN SUSSEX M



BLACK ORPINGTON F



JERSEY GIANT M



BROAD LANGSHAN PAIR



NEW HAMPSHIRE F



SCOTS GREY PAIR



LINCOLNSHIRE BUFF M



GOLD BRAHMA F



BARNEVELDER F



RHODE ISLAND RED M



BARRED PLYMOUTH ROCK F



BLUE ORPINGTON PAIR



ANDALUSIAN M



SPECKLED SUSSEX PAIR



DARK BRAHMA M



BUFF COCHINI F



BLACK MINORCA M



LIGHT SUSSEX F



AUSTRALORP M



SALMON FAVEROLLE PAIR



BLACK SILKIE F



SILVER LACED WYANDOTTE PAIR



BUILDING A CHICKEN COOP







The Eglu “Omlet”



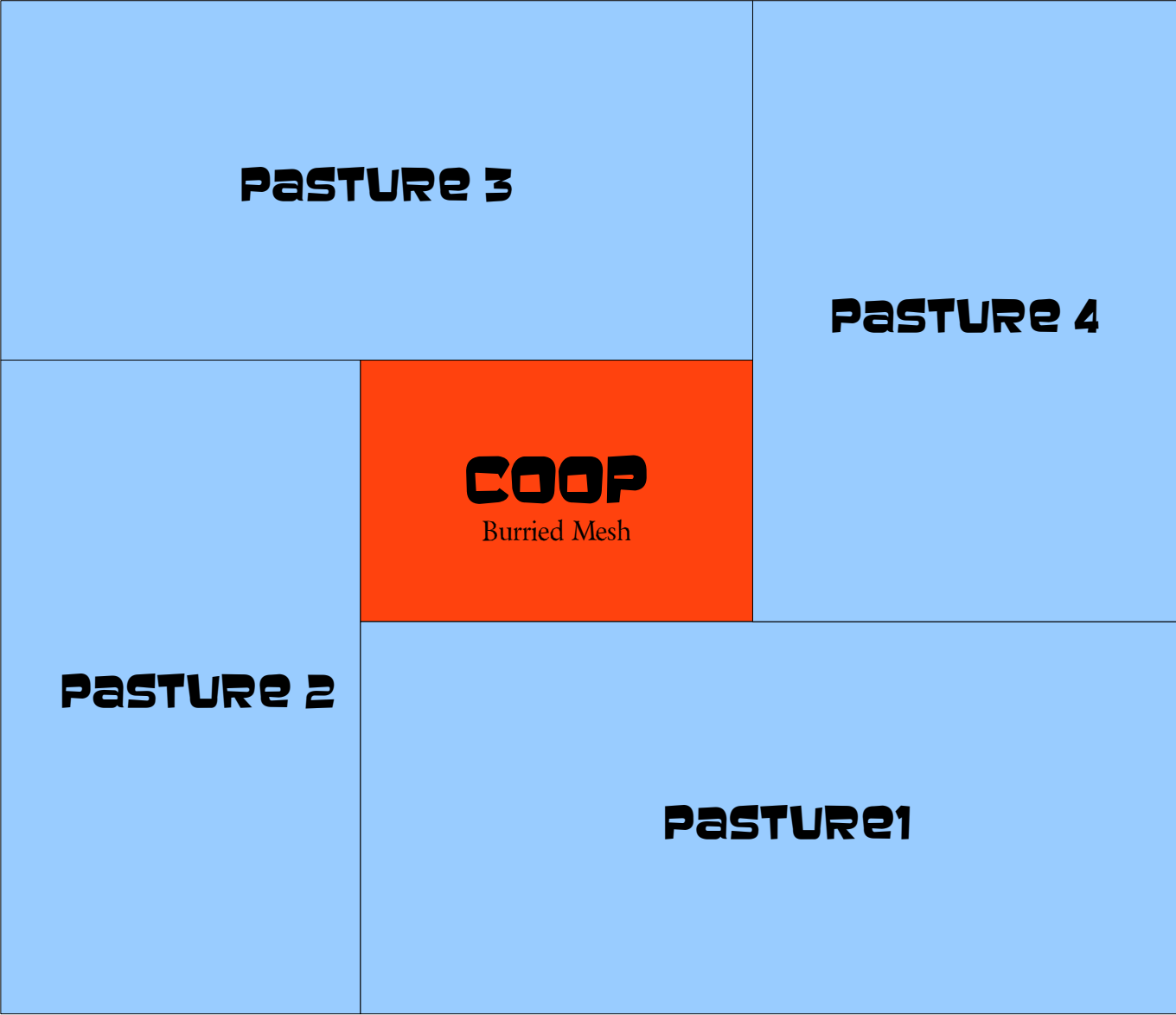


Standard Chicken Tractor

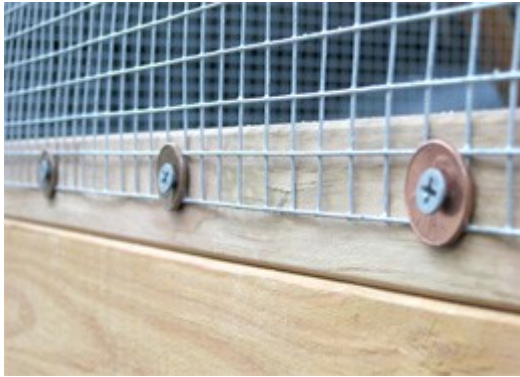


Vancooper





Main Building Materials



Hardware cloth. If no air stapler, use screws and washers



Cedar 2x2. Lightweight, resists rot, \$\$



Spruce 2x4. Cheap, requires painting, staining, or large overhangs



Pressure treated wood. Mid-price. Wear a mask and wear gloves.



ACQ Screws resist rust. Good choice for outdoor construction



DEEP LITTER/BEDDING METHOD



Using Sketchup to Plan a Coop

