

# THE PROGRAM

Recycle BC is a non-profit organization responsible for residential packaging and printed paper recycling throughout British Columbia.

Recycle BC ensures packaging and printed paper is collected from households and recycling depots, sorted and recycled responsibly. The Recycle BC program is funded by over 1,200 businesses, like retailers, manufacturers and restaurants, that supply packaging and printed paper to BC residents, to shift recycling costs away from homeowners.



## CONTACT

778-588-9504

Toll Free: 1-855-875-3596

info@recyclebc.ca

## WEBSITE

www.recyclebc.ca



CHALLENGE ACCEPTED

*Port Hardy~Smithers~  
Summerland*

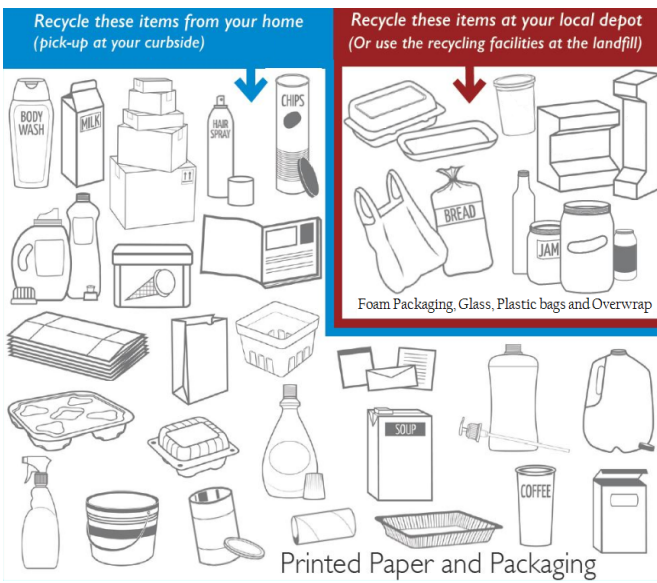


PLEASE HELP PORT HARDY  
WIN THE 2017 REDUCING  
CONTAMINANTS  
CHALLENGE COMPETITION



Goals:

- #1 AWARENESS #2 EDUCATION
- #3 REDUCTION #4 INSPIRE



Glass, polystyrene foam, electronics, and plastic film/bags make up the bulk of the recyclables that cannot be picked up curbside. Please be environmentally responsible and dispose of these items at a local recycling depot: Fox's Disposal (250-949-6306), Pt. Hardy Return-It Centre (250-949-7700) or at the 7-Mile Landfill & Recycling Ctr. (250-949-1681).



There are some materials that are not currently recyclable which must go directly into your garbage. These include packing peanuts, bubble wrap, cling wrap, chip and snack bags, zip-lock bags, cellophane wrapping, foil gift wrap, ribbons, and bows.



For more information, please visit the following websites:  
[www.porthardy.ca/community/utilities/recycling-options/](http://www.porthardy.ca/community/utilities/recycling-options/)  
[www.rdmw.bc.ca/](http://www.rdmw.bc.ca/)  
[www.recyclebc.ca](http://www.recyclebc.ca)



**CURBSIDE AND DROP-OFF RECYCLING PROGRAM**

Recycle BC services over 1.7 million households, or over 97% of BC

Operational Services at 250-949-7779  
 Email: [pw@porthardy.ca](mailto:pw@porthardy.ca)

DISTRICT OF PORT HARDY  
**GARBAGE & RECYCLING SCHEDULE 2017**

Garbage Pick Up      Recycling Pick Up

APRIL							MAY							JUNE						
Su	Mo	Tu	We	Th	Fr	Sa	Su	Mo	Tu	We	Th	Fr	Sa	Su	Mo	Tu	We	Th	Fr	Sa
					1		1	2	3	4	5	6					1	2	3	
2	3	4	5	6	7	8	7	8	9	10	11	12	13	4	5	6	7	8	9	10
9	10	11	12	13	14	15	14	15	16	17	18	19	20	11	12	13	14	15	16	17
16	17	18	19	20	21	22	21	22	23	24	25	26	27	18	19	20	21	22	23	24
23	24	25	26	27	28	29	28	29	30	31				25	26	27	28	29	30	
30																				
JULY							AUGUST							SEPTEMBER						
Su	Mo	Tu	We	Th	Fr	Sa	Su	Mo	Tu	We	Th	Fr	Sa	Su	Mo	Tu	We	Th	Fr	Sa
					1			1	2	3	4	5						1	2	
2	3	4	5	6	7	8	6	7	8	9	10	11	12	3	4	5	6	7	8	9
9	10	11	12	13	14	15	13	14	15	16	17	18	19	10	11	12	13	14	15	16
16	17	18	19	20	21	22	20	21	22	23	24	25	26	17	18	19	20	21	22	23
23	24	25	26	27	28	29	27	28	29	30	31			24	25	26	27	28	29	30
30	31																			
OCTOBER							NOVEMBER							DECEMBER						
Su	Mo	Tu	We	Th	Fr	Sa	Su	Mo	Tu	We	Th	Fr	Sa	Su	Mo	Tu	We	Th	Fr	Sa
1	2	3	4	5	6	7				1	2	3	4						1	2
8	9	10	11	12	13	14	5	6	7	8	9	10	11	3	4	5	6	7	8	9
15	16	17	18	19	20	21	12	13	14	15	16	17	18	10	11	12	13	14	15	16
22	23	24	25	26	27	28	19	20	21	22	23	24	25	17	18	19	20	21	22	23
29	30	31					26	27	28	29	30			24	25	26	27	28	29	30
														31						

The Transfer Station is open 1:00pm-4:00pm Tuesdays, Fridays, Saturdays and Sundays AND WILL BE OPEN JULY 1, & NOVEMBER 11, 2017. Garbage pickup days may be changed during the Christmas and New Year period only and pickup days will not be affected by other statutory holidays. There will be notifications to advise of any pickup changes for the Christmas and New Year period on the District of Port Hardy website [www.porthardy.ca](http://www.porthardy.ca) and advertised in the North Island Gazette (published at least two weekly issues in advance of changes).