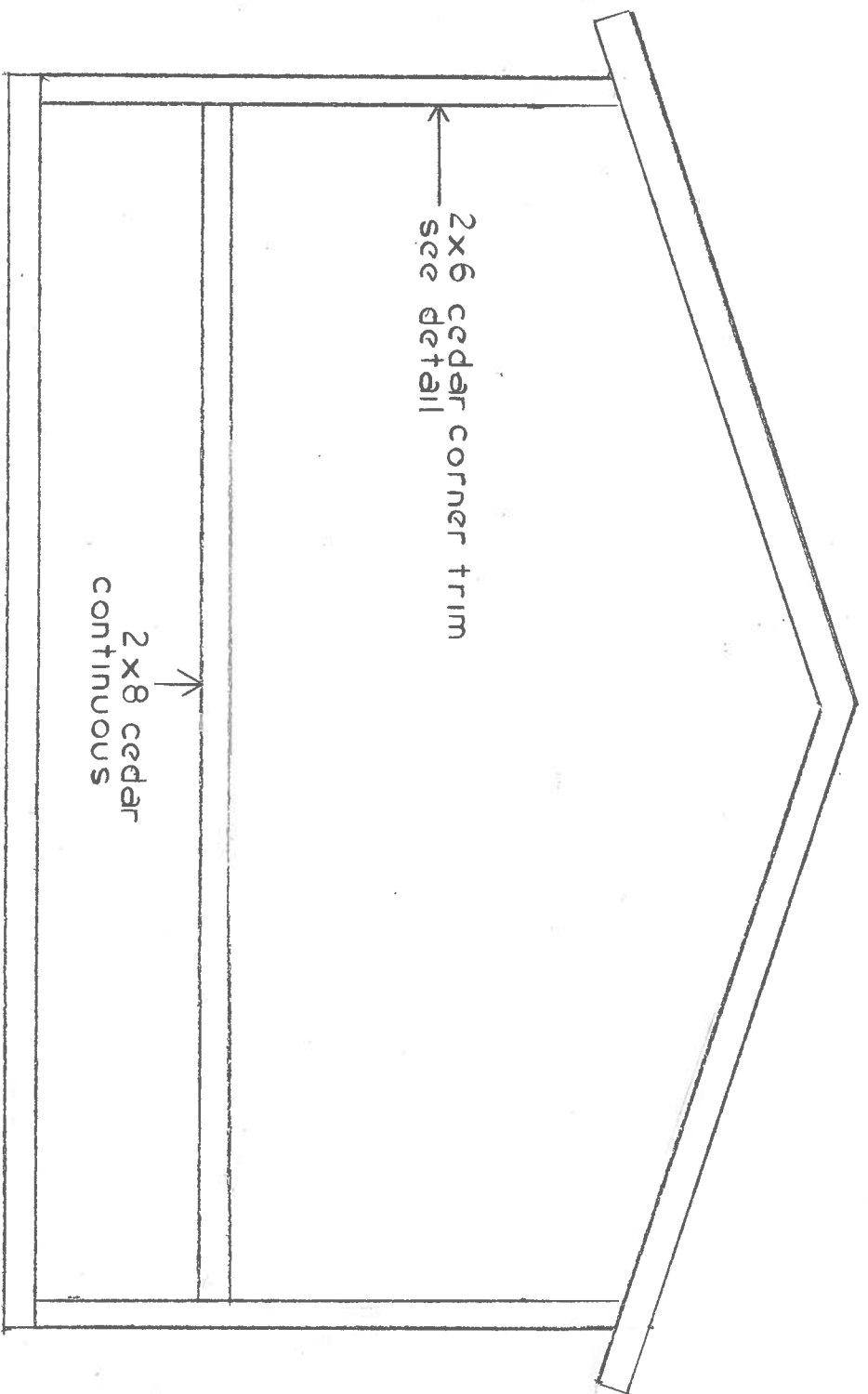
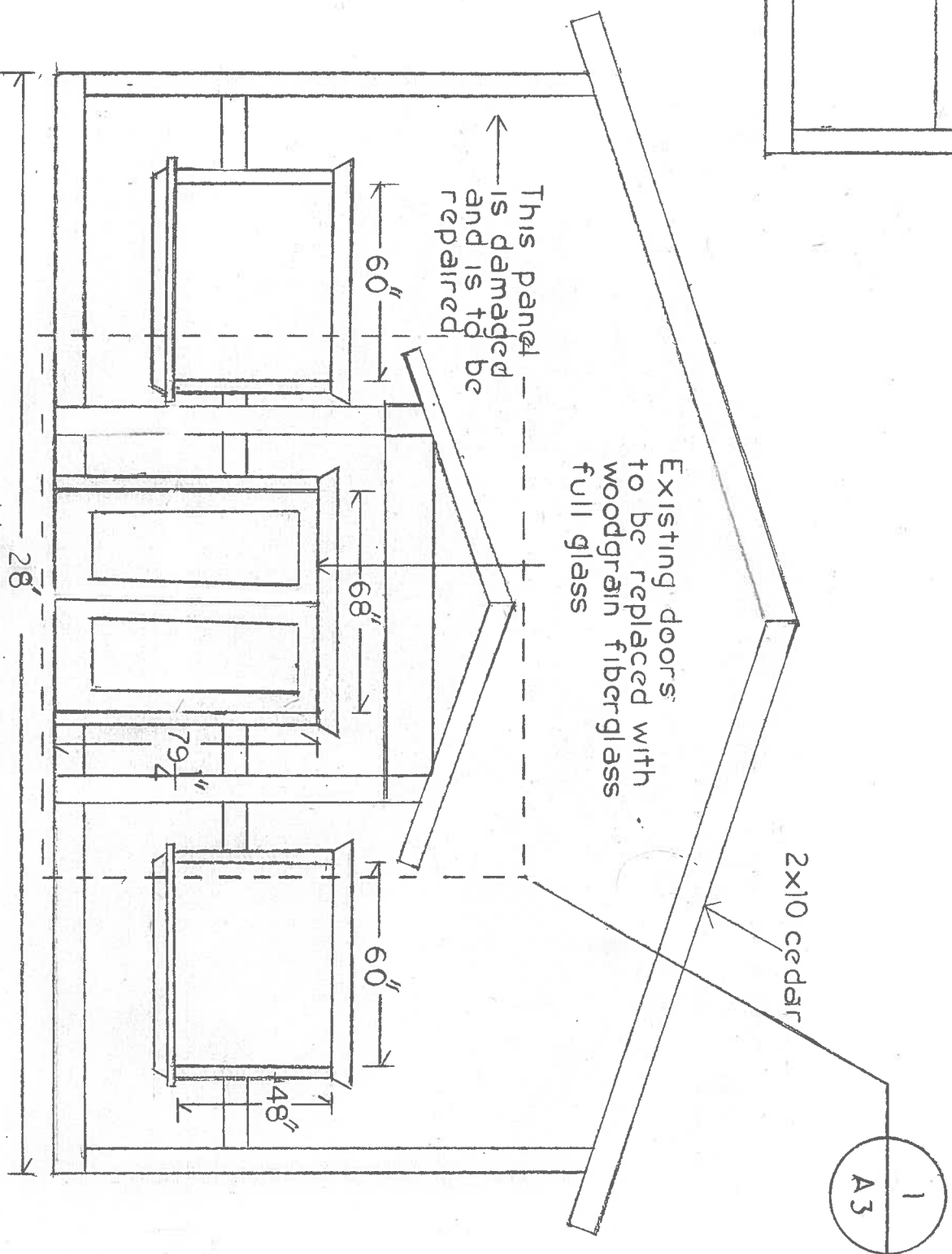


DISTRICT OF PORTHARDY  
 SEAGATE PIER BUILDING REFURBISH  
 Date: December 7, 2016  
 Scale: 1" = 1'  
 ELEVATION  
 Drawn by: Municipal Inspector  
 A1



EAST ELEVATION



WEST ELEVATION

DISTRICT  
OF  
PORT HARDY  
SEAGATE  
PIER  
BUILDING  
REFURBISH

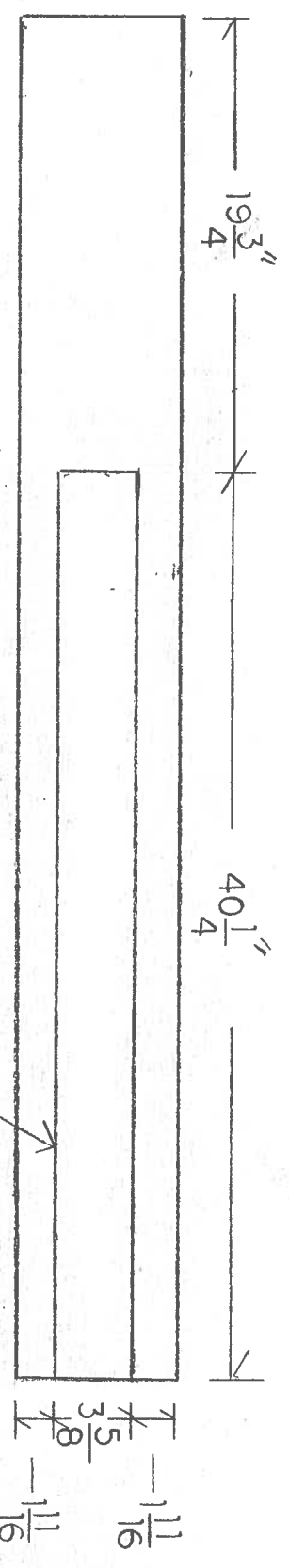
Date:  
December 7, 2016

Scale:  
1/4" = 1'

ELEVATION

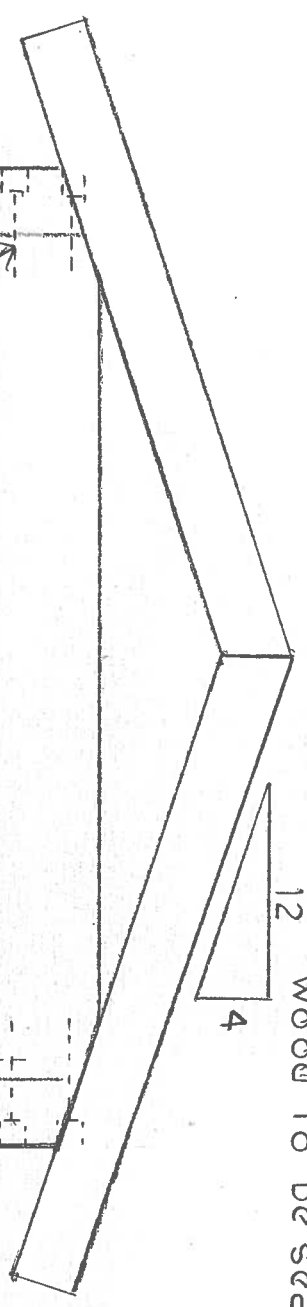
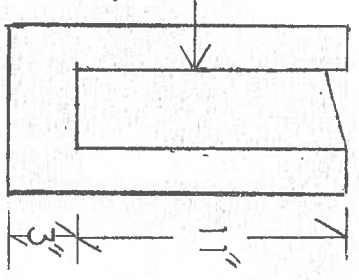
Drawn by:  
Municipal  
Inspector

A2



scale:  $1\frac{1}{2}''=1'$

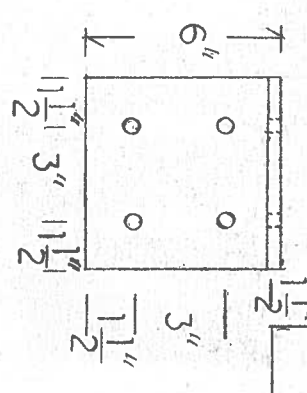
7 x 14 beam to be notched to receive the existing steel beam notch to be clean square and tight to existing beam joint between steel and wood to be scaled



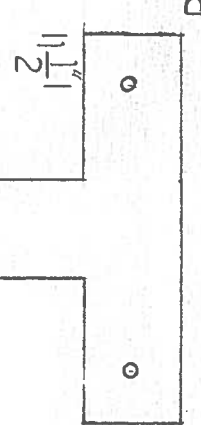
10 x 1/2" lag bolts countersunk  
 7 x 14 cedar  
 2-6" x 4" x 1/4" Steel angle comes with 6 holes for 4 x 1/2" lag bolts  
 scale:  $1''=1'$

All bolts to be galvanized  
 All steel fabrication to be painted black  
 All bolt to wood connection require a galvanized timber washer

12 1/8"



Steel T strap comes with 4 holes for 4 x 1/2" lag bolts



63"

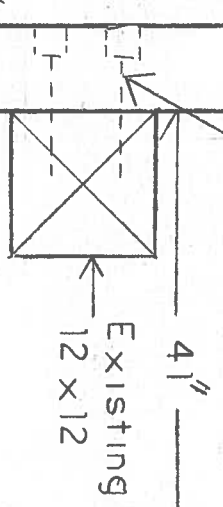
Roof construction:  
 2 x 8" cedar rafters  
 1 x 6" cedar t & g decking  
 1/2" plywood  
 building paper  
 26 gauge standing seam



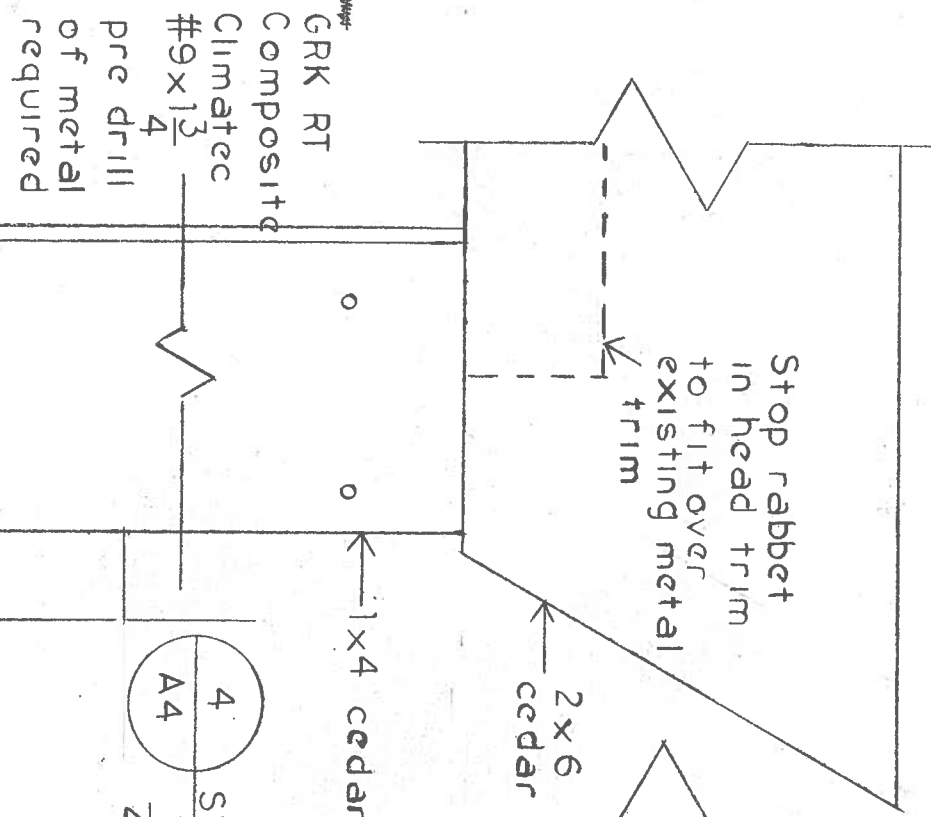
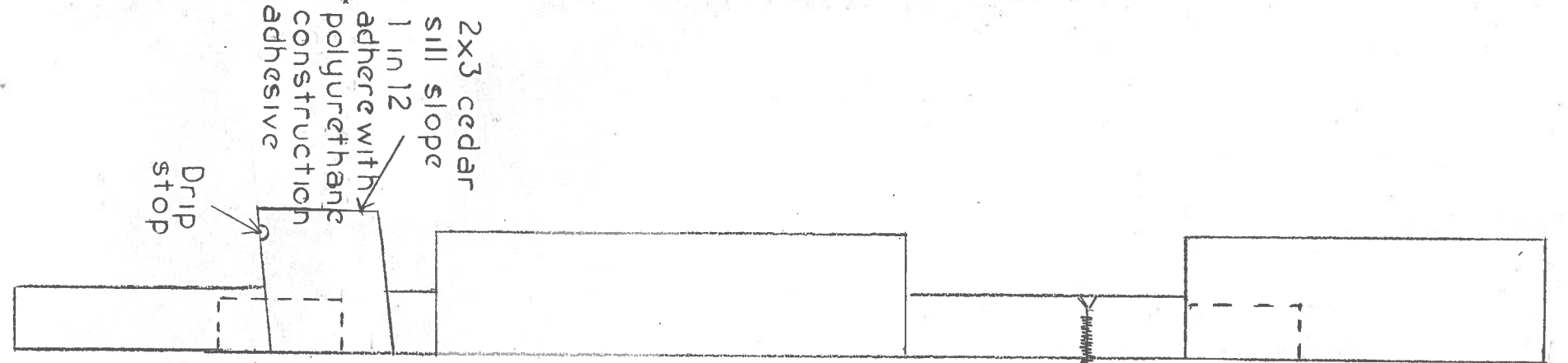
7 x 14 cedar  
 Existing 3 1/2 x 11 steel beam  
 6 x 1/2 thru bolts

7 x 7 cedar  
 scale:  $3''=1'$

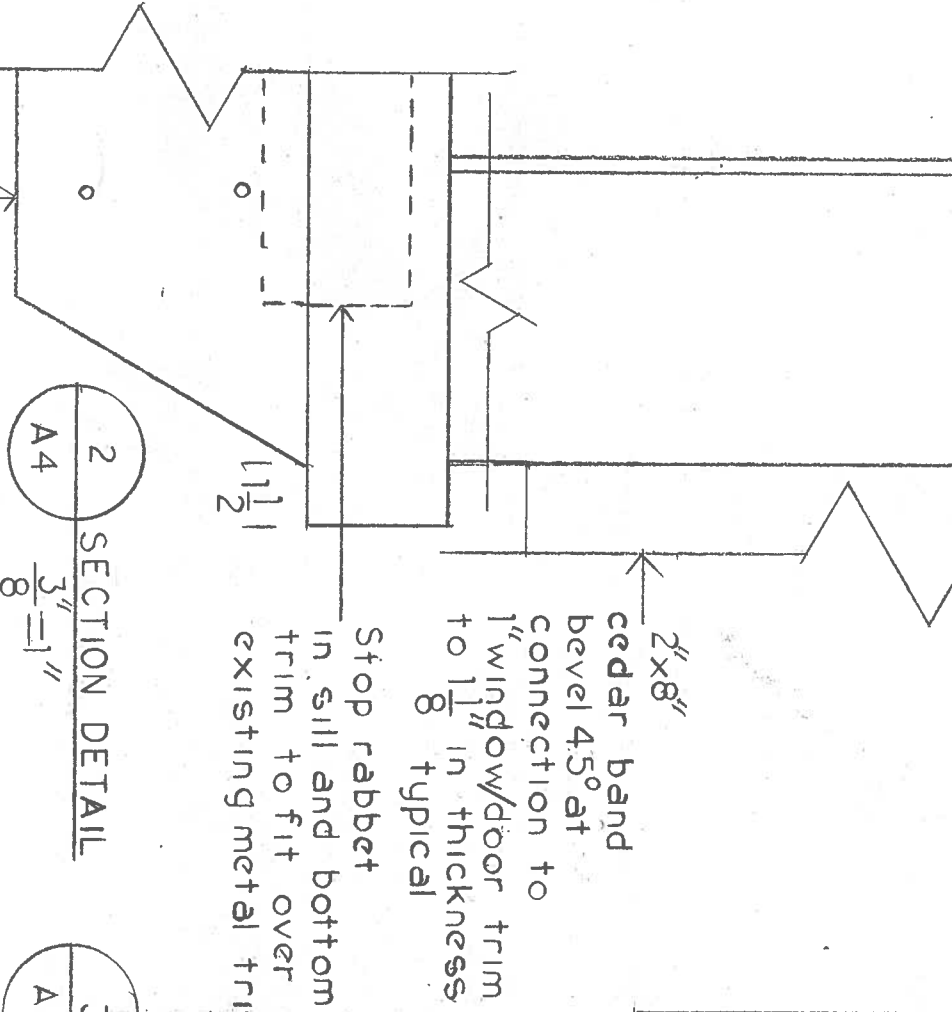
10 x 1/2 galvanized lag bolts countersunk



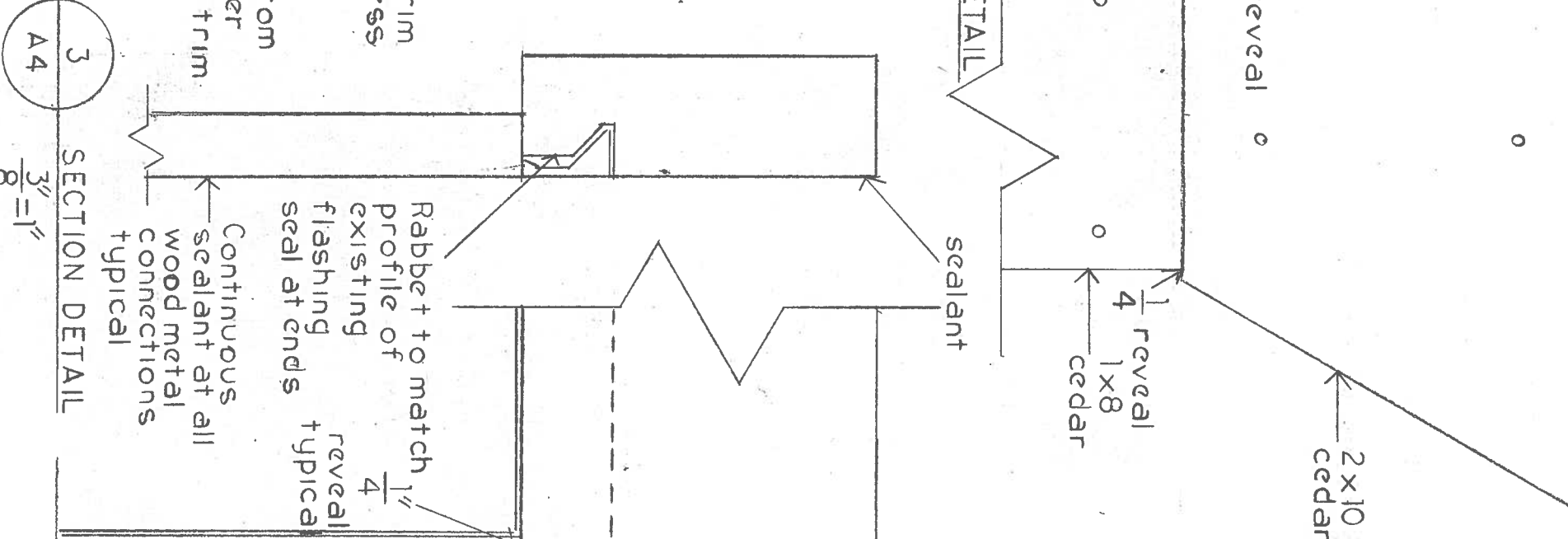
DISTRICT OF SEAGATE PIER BUILDING REFURBISH	
Date:	December 7, 2016
Scale:	as noted
SECTION DETAILS	
Drawn by:	Municipal Inspector
A3	



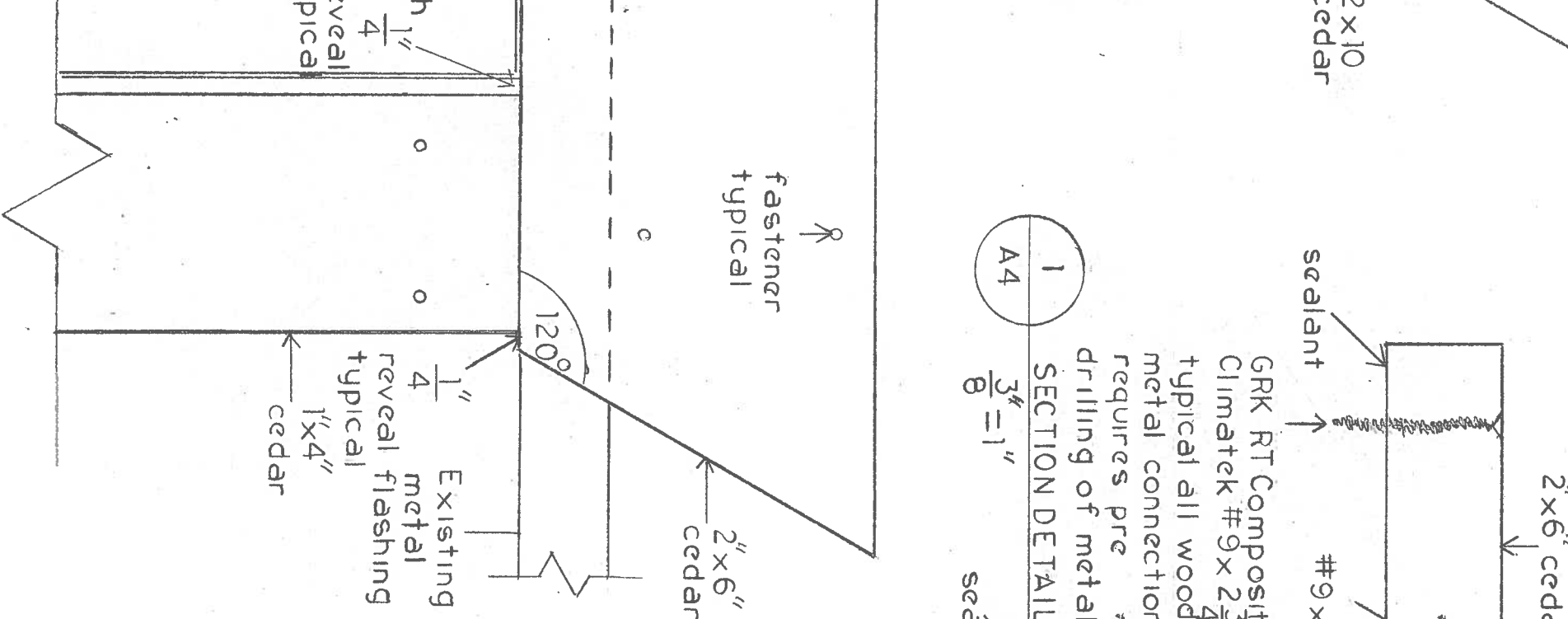
4 SECTION DETAIL  
A4 1/4" = 1"



2 SECTION DETAIL  
A4 3/8" = 1"



3 SECTION DETAIL  
A4 3/8" = 1"



1 SECTION DETAIL  
A4 3/8" = 1"

DISTRICT OF PORT HARDY SEAGATE PIER BUILDING REFURBISH
Date: December 7, 2016
Scale: as noted
SECTION DETAILS
Drawn by Municipal Inspector
A4